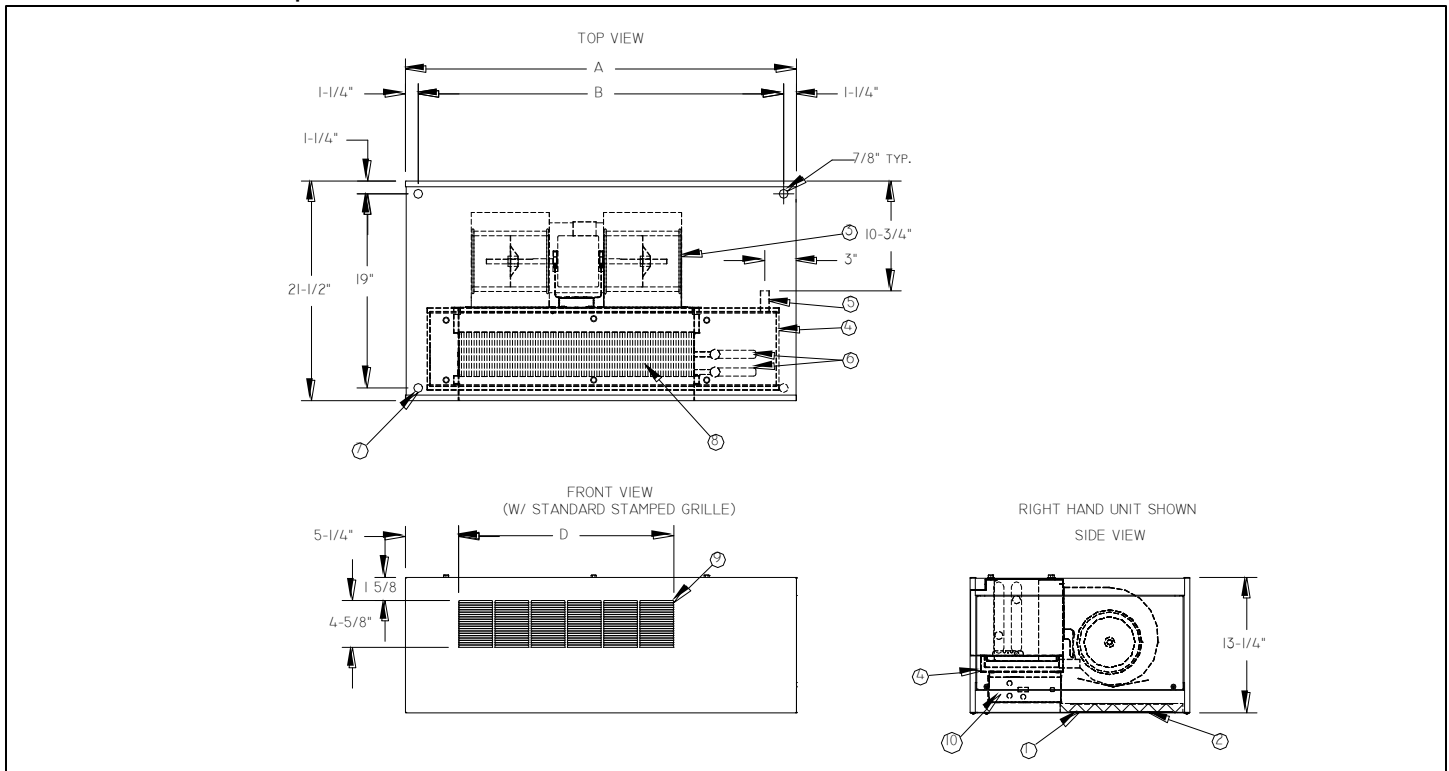


BHC

Horizontal Basic Exposed Cabinet



Model	Dimensions (Inches)				Approx. Weight (lb)
	A	B	C	Filter	
BHC02	29 1/4	26 3/4	5/8	16x12x1	98
BHC03	32 1/4	29 3/4	5/8	24x12x1	112
BHC04	38 1/4	35 3/4	5/8	28x12x1	126
BHC06	47 1/4	44 3/4	5/8	38x12x1	144
BHC08	55 1/4	52 3/4	5/8	46x12x1	165
BHC10	65 1/4	62 3/4	7/8	(2) 28x14x1	196
BHC12	75 1/4	72 3/4	7/8	(2) 31x14x1	221

1. Filter
2. Access Panel
3. Blower / motor assembly
4. Condensate pan
5. Drain connection - 3/4" MNPT
6. Chilled water connections (supply and return)
O.D. = 'C'; Hot water connections = 5/8" O.D.
7. Mounting holes with rubber grommets
8. Coil assembly
9. Supply air grille
10. Control/Electrical box

Accessories (Optional)

Check if provided.

- Thermostat _____
- Control Transformer & Fan Relays
- Aquastat Changeover Switch

- Unit Disconnect Switch
- Fuse
- Supply Grille, Double Deflection
- Special Color _____ (specify)

This submittal is meant to demonstrate general dimensions of this product. The drawings are not meant to detail every aspect of the product. Drawings are not to scale. Superior Rex reserves the right to make changes without written notice.

Accessories (Optional)

Coil - 3/8" O.D. Copper Tube; 10 Fins/Inch Aluminum, Sine Wave

2-Pipe

- 2-Row (STD.)
 3-Row (STD.)
 4-Row
 5-Row

4-Pipe (Cooling Rows/Heating Rows)

- 2/1-Row
 3/1-Row
 3/2-Row
 4/1-Row
 Chilled Water Cooling
 Hot Water Heating
 Glycol Cooling
 Glycol Heating

Motor

Motor(s) – 3-speed PSC

Standard
115V/60Hz/1ph

Model	HP	Total Amps
BHC02	1/20	0.8
BHC03	1/20	0.8
BHC04	1/20	0.8
BHC06	1/10	1.5
BHC08	1/10	1.5
BHC10	2 x 1/10	2 x 1.5
BHC12	2 x 1/10	2 x 1.5

Optional:

- 208V/60Hz/1ph
 230V/60Hz/1ph
 277V/60Hz/1ph

Features:

- Automatic Reset
- Thermal Overload Protection System

Electric Heat – Single Phase (Optional)

Heater Voltage

- 115V
 208V
 230V
 277V

		Electric Heater kW. Primary or Supplementary			
		115 Volts	208 Volts	230 Volts	277 Volts
Size	Blowers	Min-Max kW	Min-Max kW	Min-Max kW	Min-Max kW
02	1	1-2 kW	1-2 kW	1-2 kW	1-2 kW
03	1	1-3 kW	1-3 kW	1-3 kW	1-3 kW
04	2	1-4 kW	1-4 kW	1-4 kW	1-4 kW
06	2	1-4 kW	1-6 kW	1-6 kW	1-6 kW
08	2	1-4 kW	1-8 kW	1-8 kW	1-8 kW
10	4	2-4 kW	2-9 kW	2-10 kW	2-10 kW
12	4	2-4 kW	2-9 kW	2-10 kW	2-12 kW

Condensate Pan

- | | |
|--|--|
| <input type="checkbox"/> Galvanized (STD.) | <input type="checkbox"/> Safety Overflow Float Switch* |
| <input type="checkbox"/> Safety (Two) Drain Connection | |
| <input type="checkbox"/> Extension Plate | |
| <input type="checkbox"/> Mastic Coating | |
| <input type="checkbox"/> Stainless Steel Inner Layer | |
| <input type="checkbox"/> Marine (3" Deep) | |
| <input type="checkbox"/> Marine with Anti-Slosh Media | |

Description: Inner and Outer Layer of 18 gauge Galvanized Sheet Metal with One - Inch Internal Insulation

*24V, requires transformer and fan relay if not obtained with a 24V thermostat.

Valves and Valve Accessories

- | | |
|--|--|
| <input type="checkbox"/> Shut - Off Valve(s) | <input type="checkbox"/> Strainer(s) |
| <input type="checkbox"/> Shut - Off Valve w/ Memory Stop | <input type="checkbox"/> Manual Flow Control Valve(s) |
| <input type="checkbox"/> 2 - Way Motorized Valve | <input type="checkbox"/> Automatic Flow Control Valve(s) |
| <input type="checkbox"/> 3 - Way Motorized Valve | <input type="checkbox"/> Unions |
| <input type="checkbox"/> 2 - Way Modulating Valve | <input type="checkbox"/> Pete's Plug(s) |

General Description

- This horizontal discharge, attractively styled, cabinet unit is ideally suited for exposed, under-ceiling mounting in schools, hospitals, hotels and commercial applications.
- Exterior fabricated of 18 gauge galvanealed steel with Rock Beige or White powder-coated paint and a 1/2" matte-faced liner for maximum thermal and acoustical insulation.
- Removable motor/blower assembly.
- Throwaway filter.
- Manual air vent.
- System charged with air to insure a leak free arrival at the job site.

This submittal is meant to demonstrate general dimensions of this product. The drawings are not meant to detail every aspect of the product. Drawings are not to scale. Superior Rex reserves the right to make changes without written notice.

All rights reserved. No part of this work may be reproduced or transmitted in any form or by any means, electronic or mechanical, including photocopying and recording, or by any information storage retrieval system without permission in writing from Air Distribution Technologies.